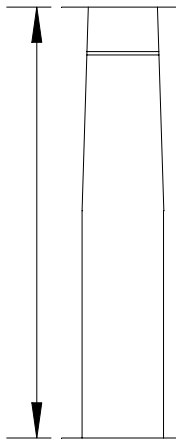


Structural or Split Column Installation

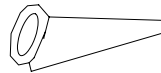
Step 1

Measure the overall height. Raise the soffit or porch slightly with brace for easy installation of the column.



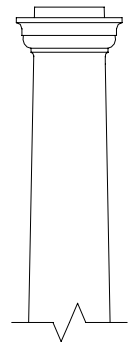
Step 2

Trim column shaft on the bottom end only. Trim with either an abrasive saw or fine-toothed handsaw. Finish both top and bottom of shaft with a rasp to assure conformance to adjacent surfaces and thereby an even load distribution around the entire circumference.



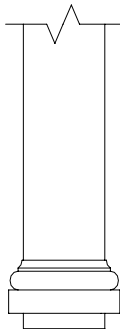
Step 3

Slide cap over top of column shaft. Let cap slide down to rest on neck mold temporarily until shaft is correctly positioned.



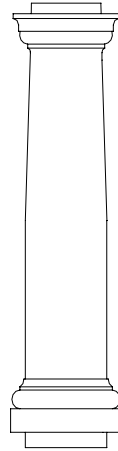
Step 4

Slide base onto column shaft from bottom.



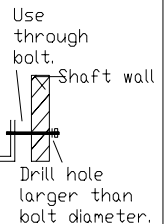
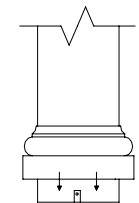
Step 5

Place column in a vertical position with load centered over column shaft with even distribution around bearing surfaces.



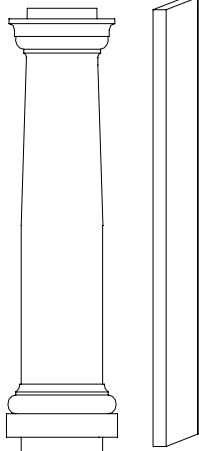
Step 6

If installation requires that columns be secured in place prior to bearing load, use small L brackets. Be careful to ensure L brackets don't interfere with seating of cap and base. NOTE: To secure bracket to column drill hole in shaft and use through bolts. **DO NOT USE SCREWS.**



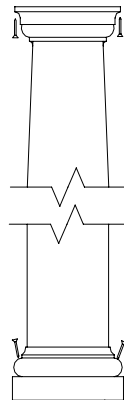
Step 7

Remove brace to allow load to bear on column shaft.



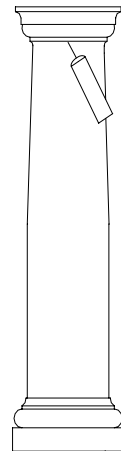
Step 8

Slide cap up to soffit and attach to soffit using corrosion resistant type screws. Attach base to floor using masonry fasteners or other appropriate fasteners.



Step 9

Caulk between the cap and the shaft, and the base and the shaft, for finished appearance.



Structural or Split Column Installation

Joining Split Columns:

Columns that are split to surround a structural support should be installed similarly to columns that are not split. However, the following procedures should be used in putting the halves back together:

- a. Apply a construction adhesive, such as PL 400, 3M 5200 or OSI Quick Bond, to the surfaces being joined.
- b. Align halves around structural support and join together. Clamp or strap and tighten uniformly until construction adhesive has cured.
- c. After curing, remove the clamps or straps and fill the seam with a polyester repair material, such as Bondo. Rough sand with 80 grit and finish sand with 120 grit or finer sandpaper.
- d. Rejoin the cap and base halves in the same manner.

Note: Also recommended is AKEMI APF7, a polyester repair material that serves as both adhesive and filler. Most boat dealers stock this product.

Finishing/Painting:

Remove all dust or dirt from surface by wiping with mineral spirits prior to painting. Use a good, high quality exterior paint on column, caps and bases. Light sanding is required if latex paint is used. An alkyd paint may be applied directly to the clean surface. Be sure to read paint manufacturer's instructions concerning temperature ranges for best results. Do NOT use paint or solvent containing acetone.